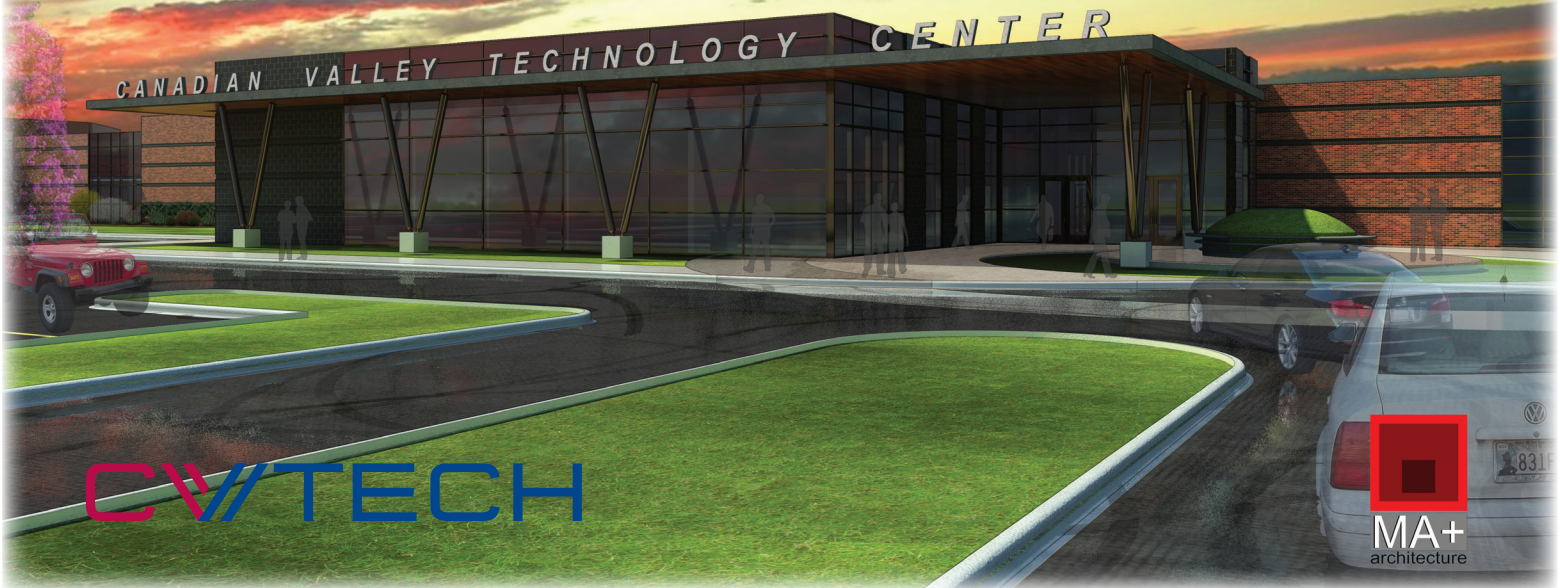


A New Day Has Dawned!



El Reno Campus Grand Re-Opening, January 10, 2017

Quick facts

PROJECT COST

\$54 million

(Includes cost of rebuilding the main building, the Dr. Greg Winters District Administration Building and the Business & Industry Services division wing, demolition, clean-up, architects fees and furniture)

PROJECT FUNDING

\$42 million (*Insurance reimbursement*)

\$12 million (*Bond issue, approved by district voters on April 1, 2014*)

PROJECT SCOPE

225,860 sf, total space:

97,840 sf, shop space

92,330 sf, classrooms

35,690 sf, Business & Industry Services

'BRICK' TOWN

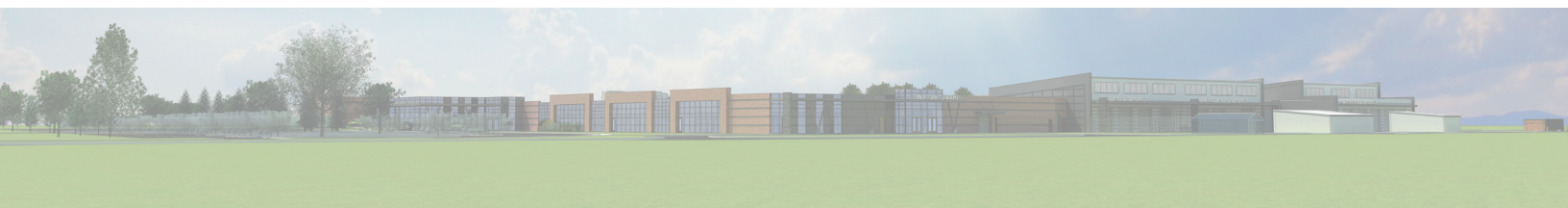
Reconstruction includes the placement of 120,000 king-size bricks and 54,000 concrete block pavers. If placed end to end, the bricks and pavers would stretch 21 miles or roughly the distance from the El Reno Campus to Bricktown in Oklahoma City.

GETTING YOUR STEPS IN

If you were to start at any point within the interior hallways of the campus and continue walking until you reached the point at which you started, you would have walked 4/5 of a mile, or 4,200 linear feet (also 1,280 meters).

EVENT CENTER

The 7,960 sf J.R. Gililland Event Center is named for CV Tech's first superintendent. It features 648 seats in a theater-style arrangement for



Quick facts

assemblies. The center can be split into three rooms, each featuring modern audio/video equipment for meetings. Canadian Valley offers the Events Center space (subject to availability) at no charge to the public (some restrictions). The Event Center, formerly an octagon shape, is now a rectangle.

A TOUCH OF CLASS

There are 17 so-called “full-time programs” at the El Reno Campus. All but Practical Nursing are open to both high school students and adults (Practical Nursing requires a high school diploma or equivalent). The Aviation Maintenance Technology program -- formerly housed at the El Reno Campus -- was relocated to Will Rogers World Airport in Oklahoma City shortly after the May 2013 tornado. Plans are for this program to remain at the airport for the foreseeable future.

A NUMBERS GAME

During reconstruction at the El Reno Campus, crews installed 10,989 sheets of drywall onto 30,713 metal studs. The insulation covers 3.6 acres (or 158,657 square feet). There are 19,948

ceiling tiles. More than 34,000 “man hours” within the scope of work were completed by construction crews, who also stretched 160 miles (850,000 feet) of power wire, 71 miles (375,000 feet) of communication cabling and 43 miles (225,000 feet) of electrical conduit.

‘HIGH’ TECH

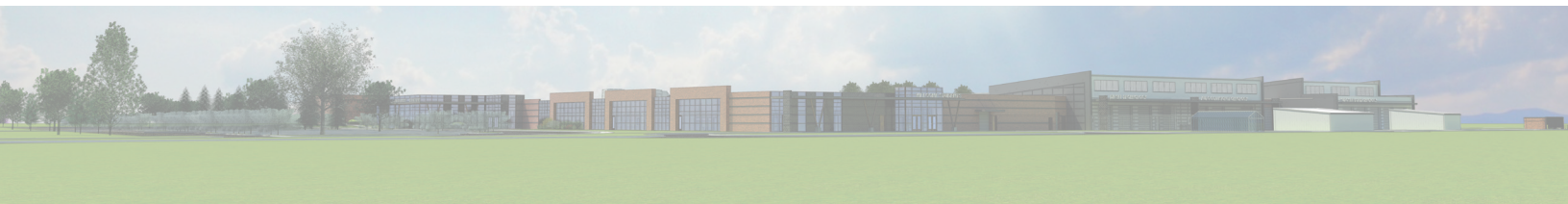
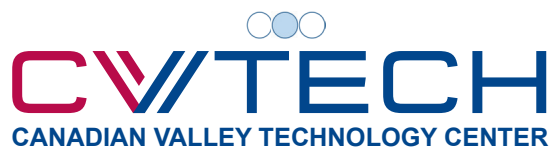
Few will see the 3,000 feet of fiber optic cabling, but they will see the results of 6,500 amps of electrical service feeding the building through some four miles (22,000 feet) of trenching for underground electrical conduit.

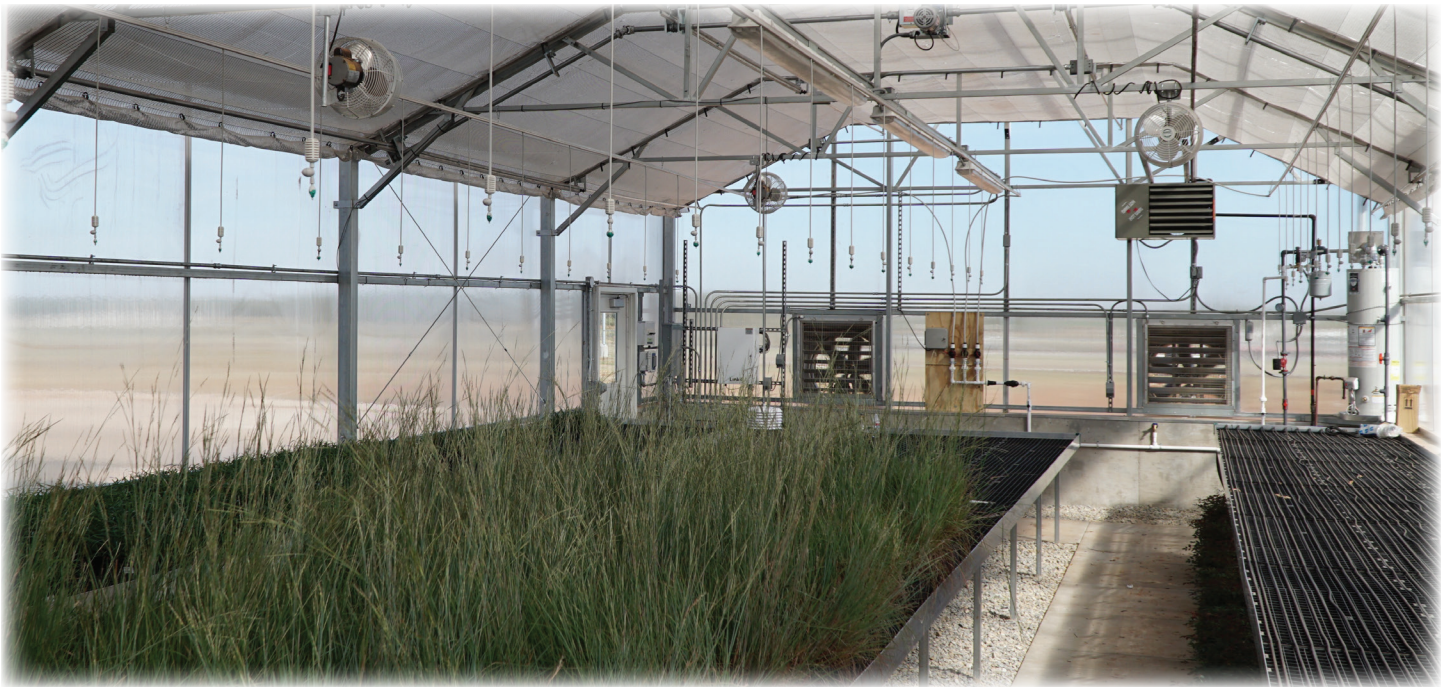
FIT & FINISH

The school awarded contracts to six furniture vendors/dealers, who utilized more than 30 different furniture manufacturers’ products. More than 100 seating pieces were requested, in addition to 78 unique table pieces. Nearly six dozen accessory items (i.e. marker boards, credenzas, bookcases, storage units) were delivered and/or installed. Architects spent a tick over 786 hours planning, meeting, organizing and packaging furniture for the facility.

SAFE ROOMS / FEMA STANDARDS

Five safe rooms were constructed at the El Reno Campus. Each was built adhering to strict FEMA standards, which require separate ventilation, 10-inch reinforced concrete walls and a dedicated rest room facility within the protected area. Superintendent Dr. Greg Winters insists the campus be one of the safest schools in the country. This architectural rendering shows a safe room in the child care facility.





ABOVE: The greenhouse on the east side of the campus is the working laboratory for Service Careers, which conducts annual bedding plant sales.



AT LEFT: Several of CV Tech's programs feature modern shops, such as this one in Automotive Service Technology. Rotary Lift auto lifts enable students to diagnose and repair the undercarriage of vehicles safely and easily, and they are industry-standard equipment at area repair shops.

Canadian Valley Technology Center

6505 E Highway 66, El Reno, OK 73036 / 405-262-2629 or 405-422-2280



@cv_tech



Canadian Valley
Technology Center



@cv_tech



@cv_tech



CVTech Online

www.cvtech.edu



Canadian Valley Technology Center affirms its policy of equal opportunity regardless of race, color, sex, pregnancy, gender, gender expression or identity, national origin, religion, disability, veteran status, sexual orientation, age or genetic information. Likewise, Canadian Valley Technology Center is committed to providing access and reasonable accommodation in its services, programs, activities, education and employment for individuals with disabilities.

